

Compact B&W Digital Office
Production Printers

Ricoh Pro™ 8300s

✓ Copier ✓ Printer ✓ Scanner

RICOH
imagine. change.



Pro 8300s

96 B/W
ppm

Small in size. Big in flexibility

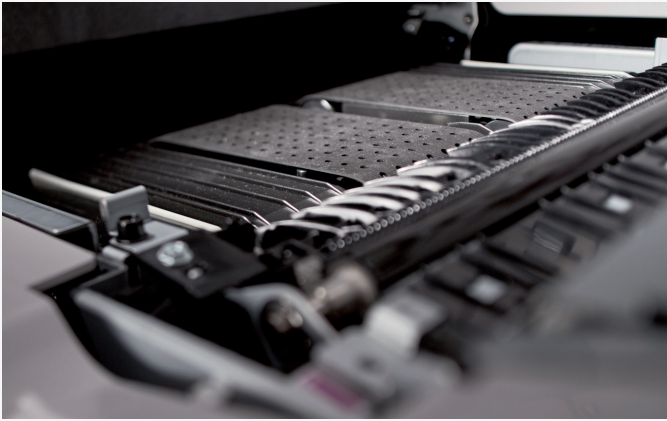
Limited on space? Need a simpler printing solution that's both easy to use and reliable? The Ricoh Pro 8300s brings you market-leading innovation wrapped up in a small footprint, which makes it the ideal fit for office and school environments.

Along with enhanced image quality delivered at 96 pages per minute, the compact Pro 8300s comes with a brand new smaller finisher and simple output tray to reduce the system size.

With improved user-friendliness and higher productivity it offers the reliability you need each and every day.

- Smaller footprint
- Shorter waiting time
- Enhanced copy functions
- Better reliability
- Simpler to use





Designed to be productive and reliable

Delivers high volume, black and white output at speeds up to 96ppm providing the quality and reliability you need.



The perfect fit

With floor space at a premium, the small footprint and new downsized finisher of the Ricoh Pro 8300s accommodates all your needs, including restricted budgets.



Enhanced copy function

New technology allows you to minimize darker area around a spine, which is generated when copying books, for clearer, easier to read results.



High image quality

The Pro 8300s uses VCSEL* technology to provide clean, smooth high definition image quality with 2400 x 4800 dots per inch resolution and higher consistent image quality over long runs.

*Vertical Cavity Surface Emitting Laser

Increase your output with ease

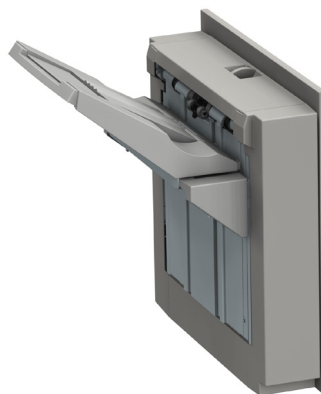
Easier for everyone to use

- New large 17 inch operation panel for simpler usage
- Machine configuration can be shown
- For remote operation the panel screen can be used on a tablet



Simple output tray

The brand new simplified output tray with slide and shift for each set, has a 1250 sheet capacity of 52-216gsm, making light work of collecting everything you print.



Improved reliability

- Improved purge function for better productivity
- New LED guidance for ease of operation



Better productivity and value



Media capability

- Enhances your output versatility
- Handles a wide range of paper including carbonless paper, textured and coated paper plus weights up to 300gsm



Uptime maximised

- Operators can replace Operator Replaceable Unit (ORU) to maximise uptime
- Remote assist capability to maximise uptime



Shorter waiting times

Faster warm-up time helps increase efficiency to give you the outstanding results you need.



New finisher for small spaces

- The low cost and space-saving finisher has a small footprint of 657mm length, total 1798mm including mainframe
- Output paper weight from 52 - 300gsm, saddle stitched up to 20 sheets, side stitched up to 65 sheets
- The shift tray can stack 3000 A4 sheets and 1500 A3 sheets to increase productivity



Pro 8300s



- 1 Pro 8300s series
- 2 Colour LCD Panel
- 3 5000 sheet A4 LCT
- 4 Standard paper trays
- 5 Booklet Finisher
- 6 ARDF Document Feeder

Ricoh Pro 8300s

MAIN SPECIFICATIONS

GENERAL

| | |
|-------------------------|---|
| Print/Copy Process: | 1-drum dry electrostatic transfer system with internal transfer belt |
| Fusing: | Oil-less belt-fusing method |
| Toner Type: | Newly formulated pulverised toner |
| Print Speed: | 96ppm |
| Resolution: | VCSEL: 2400 x 4800dpi Print: 1200x1200dpi |
| Warm-up time: | 300 seconds or less |
| Dimensions (W x D x H): | 8300s: 1141 x 900 x 1558mm (including status light) |
| Weight: | 413kg |
| Power Source: | EU: 220-240V, 16A, 50/60Hz |
| Max Monthly Volume: | > Life: 60,000,000 A4 pages or 5 years Duty cycle: 8300s - 2.9 million |

SCANNER FEATURE

| | |
|----------------|---|
| Resolution: | 100/150/200/300/400/600dpi 200dpi as a default |
| Scan speed: | B&W 120 simplex/220 duplex (A4 LEF/200dpi) Colour 120 simplex/220 duplex (A4 LEF/200dpi) |
| Max Scan Area: | 297 x 432mm |

MEDIA HANDLING

| | |
|-----------------------|---|
| Paper Input Capacity: | 1st tray (std) 1,100 sheets x 2 (Tandem Tray) 2nd tray (std) 550 sheets 3rd tray (std) 550 sheets A4/LT LCT (op) 4th tray 1,100 sheets 5th tray 1,100 sheets 6th tray 2,800 sheets A3/DLT LCT (op) 4th tray 1,100 sheets 5th tray 2,200 sheets 6th tray 1,100 sheets Bypass tray: 500 sheets |
| Max. Input Capacity: | 8,500 sheets |
| Max. Output Capacity: | 3,000 sheets |
| Paper size: | Width: 100 x 330.2mm Length: 139.7 x 487.7mm |
| Paper Weight: | 1st tray (std) 52.3 - 256gsm 2nd tray (std) 52.3 - 256gsm 3rd tray (std) 52.3 - 256gsm A4/LT LCT 4th tray 52.3 - 216gsm 5th tray 52.3 - 216gsm 6th tray 52.3 - 163gsm A3/DLT LCT 4th tray 52.3 - 256gsm 5th tray 40.0 - 300gsm 6th tray 52.3 - 256gsm Tray A 52.3 - 216gsm |

CONTROLLER

| | |
|--------------------|---|
| Configuration: | Embedded |
| CPU: | Intel® Atom® Processor Bay Trail - 1 (1.91GHz) |
| Memory: | 2GB |
| HDD: | 640GB |
| DVD-ROM Drive: | N/A |
| Operating System: | Linux |
| Network Protocol: | TCP/IP (IP v4, IP v6) |
| PDL: | PCL5e, PCL6, PDF, JPEG, TIFF, XPS, RP/GL2 |
| Optional: | Adobe PostScript 3, IPDS |
| Font: | PCL: 45 fonts, 13 International fonts |
| Network Interface: | Ethernet 1000Base-T/100Base-TX/10Base-T USB2.0 TypeA (2 port on controller board, 4 ports on operational panel), USB2.0 TypeB (2 ports on controller panel), SD Slot on operational panel |

OTHER OPTIONS

| | |
|---------|---|
| Input: | A4/LT Large Capacity Tray (RT5130), A3/DLT LCT (RT5110), A3/DLT Tray Kit (TK5020), Multi Bypass Tray (BY5020) |
| Output: | Finisher (SR5090), Booklet Finisher (SR5100), Punch Unit (PU3090), Shift Sort Tray SH5000 |
| Others: | Decurl Unit (DU5070), ORU Type S11, PostScript3 Unit Type S11, IPDS Unit Type S11, Attention Light AL3000 |

WORKFLOW SOLUTIONS

Ricoh TotalFlow Prep & Production Manager, FusionPro VDP Suite



RICOH @Remote



RICOH
imagine. change.

www.ricoh-europe.com

The facts and figures shown in this brochure relate to specific business cases. Individual circumstances may produce different results. All company, brand, product and service names are the property of and are registered trademarks of their respective owners. Copyright © 2019 Ricoh Europe PLC. All rights reserved. This brochure, its contents and/or layout may not be modified and/or adapted, copied in part or in whole and/or incorporated into other works without the prior written permission of Ricoh Europe PLC.